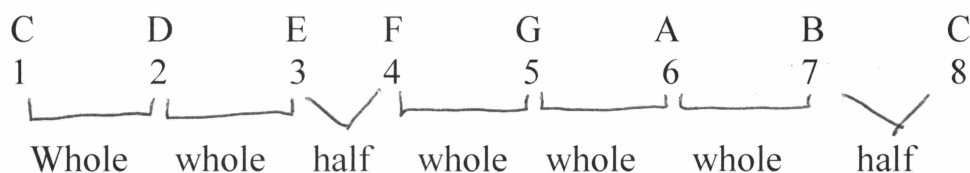


**Major scales** consists of 7 notes. We number the notes of the major scale 1 through 7. These are called degrees of the scale. There are 2 kinds of intervals between the notes on the ukulele. Whole steps and half steps. Each fret on the ukulele is  $\frac{1}{2}$  step



**Construction of Major Chords** - formed by playing the 1<sup>st</sup>, 3<sup>rd</sup>, and 5<sup>th</sup> notes of the major scale



**Major chords in a major key** - we use roman numerals to indicate chord numbers



A fingerboard chart of the entire ukulele neck through fret 12 is provided below for reference.

